



Funded by
the European Union



MINISTRY OF REGIONAL DEVELOPMENT
AND PUBLIC ADMINISTRATION



Cross-border Maritime Spatial Planning for Black Sea – Bulgaria and Romania **MARSPLAN-BS II (Jul. 2019 – Jun. 2021)**

Cross-Border Maritime Spatial Plan for the Black-Sea – Romania and Bulgaria MARSLAN – BS (Sept. 2015 – Feb. 2018)

Main Achievements & Lessons Learned

OPENING CONFERENCE

10th of October 2019

SOFIA, BULGARIA



Funded by
the European Union



MINISTRY OF REGIONAL DEVELOPMENT
AND PUBLIC ADMINISTRATION



At the European Union level it was highly recognized the importance of the sea and the need to establish a **framework for maritime spatial planning**.

A crucial step in this respect was made with the adoption of the **Directive 2014/89/EU of the European Parliament and of the Council of 23 July 2014 establishing a framework for maritime spatial planning**.

According to the Directive each Member State shall establish and implement maritime spatial planning as soon as possible, and at the latest by **31 March 2021**.



Funded by
the European Union



MINISTRY OF REGIONAL DEVELOPMENT
AND PUBLIC ADMINISTRATION



What are the objectives of maritime spatial planning?

Through their maritime spatial plans, Member States shall aim to contribute to the **sustainable development** of **energy sectors** at sea, of **maritime transport**, and of the **fisheries** and **aquaculture** sectors, and to the **preservation, protection** and **improvement** of the **environment**, including **resilience to climate change impacts**. In addition, Member States may pursue other objectives such as the promotion of **sustainable tourism** and the **sustainable extraction of raw materials**.



Funded by
the European Union



MINISTRY OF REGIONAL DEVELOPMENT
AND PUBLIC ADMINISTRATION



What are the benefits of maritime spatial planning?

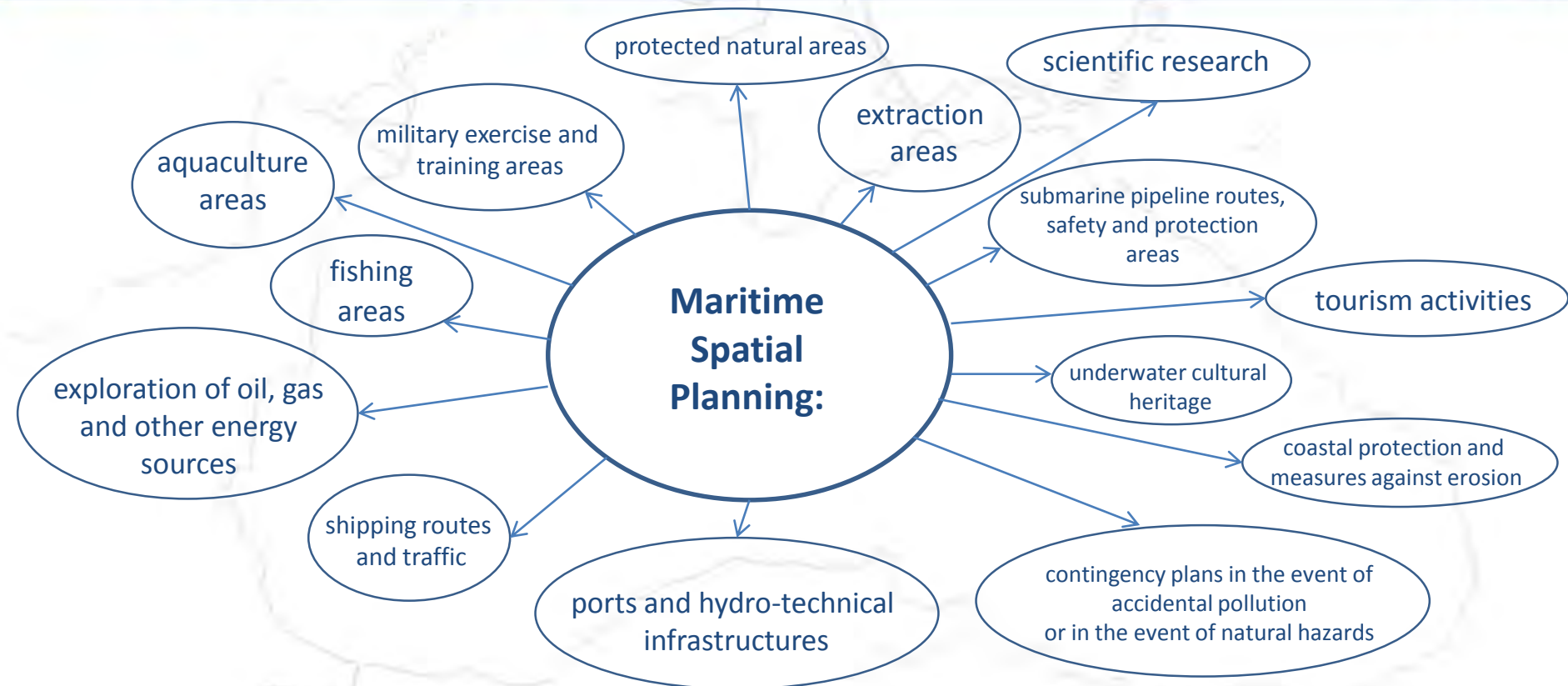
- **Reduce conflicts** between sectors and create synergies between different activities.
- **Encourage investment** – by creating predictability, transparency and clearer rules.
- **Increase cross-border cooperation** – between EU countries to develop energy grids, shipping routes, pipelines, submarine cables and other activities, but also to develop coherent networks of protected areas.
- **Protect the environment** – through early identification of impact and opportunities for multiple use of space.



Funded by
the European Union



MINISTRY OF REGIONAL DEVELOPMENT
AND PUBLIC ADMINISTRATION





Funded by
the European Union



MINISTRY OF REGIONAL DEVELOPMENT
AND PUBLIC ADMINISTRATION



In order to support the implementation of the Directive 2014/89/EU, the European Commission approved a grant for the implementation of the Cross-Border Maritime Spatial Plan for the Black Sea – Romania, Bulgaria - **MARSPLAN-BS project** (Sept. 2015 – Feb. 2018).

The project was financed under the grant agreement EASME/EMFF/2014/1.2.1.5/2/SI2.707672 MSP LOT 1 Black Sea/ MARSPAN-BS signed between the Executive Agency for Small and Medium-sized Enterprises as delegated by the European Commission and the Ministry of Regional Development and Public Administration, as the Lead Partner of the project.



Funded by
the European Union



MINISTRY OF REGIONAL DEVELOPMENT
AND PUBLIC ADMINISTRATION



Objectives of the MARSPLAN – BS project:

- supporting the **implementation** of the Directive on EU maritime spatial planning;
- creating an **institutional framework** for Romania-Bulgaria cross-border maritime spatial planning;
- consolidating the **cross-border cooperation** and **exchange of information** between Romania and Bulgaria on issues related to maritime area;
- creating a **vision and strategic objectives** for the Black Sea area, also taking into account the interaction between the territory and the sea;
- elaboration of the **maritime spatial plan for the identified Romania-Bulgaria** cross-border area (Mangalia - Shabla) ;
- contributing to a **wider dissemination of information** on maritime spatial planning for the Black Sea and **good practices to all relevant actors**.



Funded by
the European Union



MINISTRY OF REGIONAL DEVELOPMENT
AND PUBLIC ADMINISTRATION



The Partnership:



1. Ministry of Regional Development and Public Administration (RO) – Lead Partner;
2. Ministry of Regional Development and Public Works (BG);
3. Ministry of Waters and Forests (RO);
4. National Institute for Marine Research and Development “Grigore Antipa” (RO);
5. “Danube Delta” National Institute for Research and Development (RO);
6. National Institute for Research and Development in Construction, Urban Planning and Sustainable Development URBAN-INCERC (RO);
7. “Ovidius” University of Constanta (RO);
8. Executive Agency "Maritime Administration" (BG);
9. Bulgarian Ports Infrastructure Company (BG);
10. Institute of Oceanology - Bulgarian Academy of Sciences (BG).



Funded by
the European Union



MINISTRY OF REGIONAL DEVELOPMENT
AND PUBLIC ADMINISTRATION



The activities of the project were structured in 4 working packages (WP)

- WP 1 Cross-border Maritime Spatial Development;
- WP 2 Project Management;
- WP 3 Communication and Dissemination;
- WP 4 Lessons Learned.



Funded by
the European Union



MINISTRY OF REGIONAL DEVELOPMENT
AND PUBLIC ADMINISTRATION



Main results:

- Elaboration of **detailed studies for a complete analysis** of the Romanian and Bulgarian maritime areas;
- **5 case studies** on major challenges within the Romanian and Bulgarian maritime space: Eforie, Sfântu Gheorghe, Bourgas, Shipping routes, Aquaculture and fisheries;
- Analysis on the **institutional and legislative framework** as regard to MSP: most important challenges and solutions;
- **Common methodology** for analysis and spatial planning for maritime cross-border area;
- **Common strategic framework** for MSP;
- **Maritime spatial plan for the cross-border area** (Mangalia – Shabla);
- Improving the **stakeholders** to maritime data and information;
- **Transposition of the Directive 2014/89/EU.**



Funded by
the European Union

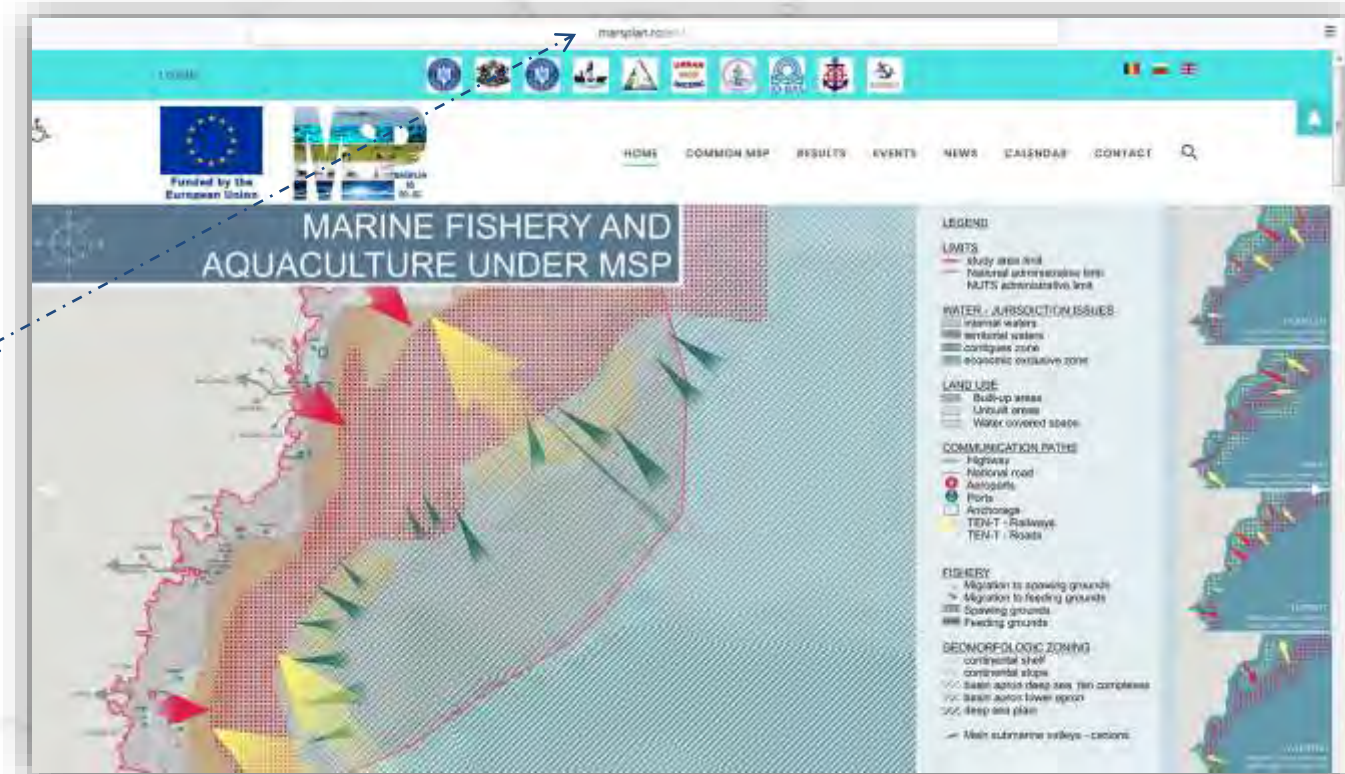


MINISTRY OF REGIONAL DEVELOPMENT
AND PUBLIC ADMINISTRATION



Where can you find the project's results and updates:

www.marsplan.ro





Funded by the European Union



MINISTRY OF REGIONAL DEVELOPMENT AND PUBLIC ADMINISTRATION



The screenshot shows the MARSPLAN website with a navigation menu including HOME, COMMON MAP, RESULTS, EVENTS, NEWS, CALENDAR, and CONTACT. The main content area displays the following information:

- EUROPEAN COMMISSION**
Executive Agency for Small and Medium-sized Enterprises (EASME)
Department A - COSME, H2020 SME and EMFF, Unit A3 - EMFF
- all reference No:** MARE/2014/22
- Project Full Name:** Cross border maritime spatial planning in the Black Sea - Romania and Bulgaria (MARSPLAN - BS)
- Project No:** EASME/EMFF/2014/1.2.1.5/2/612.707672 MSP LOT 1 /BLACK SEA/MARSPLAN-BS
- A European Maritime and Fisheries Fund (EMFF)**

Elaboration of detailed studies for a complete analysis of the Romanian and Bulgarian maritime areas



Funded by
the European Union



MINISTRY OF REGIONAL DEVELOPMENT
AND PUBLIC ADMINISTRATION



Case study:

- Eforie;
- Bourgas;
- Shipping routes;
- Aquaculture and fisheries;
- Sfântu Gheorghe.

The screenshot shows the website marsplan.ro with a teal header. The main content area features a large teal banner with the text "Case study" and a sub-header "Case study" above a section titled "Eforie Nord - Eforie Sud area". The text describes the location and features of the area, including its proximity to the sea and Lake Techirghiol. A "READ MORE" button is visible at the bottom of the section.



Funded by
the European Union



MINISTRY OF REGIONAL DEVELOPMENT
AND PUBLIC ADMINISTRATION



marplan.ro/en/results/common-strategic-framework-for-msp.html



Funded by the
European Union



HOME COMMON MSP RESULTS EVENTS NEWS CALENDAR CONTACT



Common strategic framework for MSP

The strategic framework for maritime spatial planning in Romania and Bulgaria aim to develop a common development vision, common principles and common objectives for all maritime spatial area in Romania and Bulgaria (territorial sea and the coastal area - adjacent localities - LAU2). The common strategic framework developed an action plan which will ensure the coherence between the activities from maritime space, in one hand, and between activities on the sea and on the coastal area. This strategic framework will represent an important starting point for the national spatial plan of the maritime areas for both countries, to be realized afterwards within the implementation of the MSP Directive.



The strategic framework - important starting point for the national spatial plan of the maritime areas for both countries, to be realized afterwards within the implementation of the MSP Directive



Funded by the European Union



MINISTRY OF REGIONAL DEVELOPMENT AND PUBLIC ADMINISTRATION



marsplan.ro/cv/realizari/marine-spatiale-plan-fer-456-0202-border-area-mangalia-shabla.html

HOME COMMON MSP RESULTS EVENTS NEWS CALENDAR CONTACT

Funded by the European Union

Marine spatial plan for the cross-border area Mangalia Shabla

Current situation analysis

EUROPEAN COMMISSION
Executive Agency for Small and Medium-sized Enterprises (EASME)
Department A – COSME, H2020 SME and EMFF
Unit A3 - EMFF

Call reference No: MARE/2014/22

Project Full Name: Cross border maritime spatial planning in the Black Sea – Romania and Bulgaria (MARSPLAN – BS)

Project No: EASME/EMFF/2014/1.2.1.5/2/SI2.707672 MSP LOT 1 /BLACK SEA/MARSPLAN-BS

European Maritime and Fisheries Fund (EMFF)

Marine spatial plan for the cross-border area Mangalia

Maritime Spatial Plan for the Cross-Border Area Mangalia - Shabla



Funded by
the European Union



MINISTRY OF REGIONAL DEVELOPMENT
AND PUBLIC ADMINISTRATION



GIS
Image
Capture -
Sea and
land uses



Funded by
the European Union



MINISTRY OF REGIONAL DEVELOPMENT
AND PUBLIC ADMINISTRATION



MARSPLAN-BS Story Map Series

Cross-Border Maritime Spatial Plan for the Black Sea - Romania and Bulgaria (MARSPLAN - BS)

Administrative features Natural features Protected areas & biodiversity Anthropogenic features



MSP

Natural features

- BG Coast
- BG Rivers
- RO Baseline
- RO Rivers
- BG Standing waters
- RO Forests
- RO Lakes

Administrative features

- RO Administrative boundary
- BG Territorial waters
- BG Internal waters
- BG Contiguous zone
- BG LAU2 boundary
- BG NUTS2 boundary
- BG Administrative boundary
- RO NUTS3 boundary
- RO Territorial waters
- RO Contiguous zone
- RO Exclusive Economic Zone

esri

This project is funded by the European Union through the European Maritime and Fisheries Fund

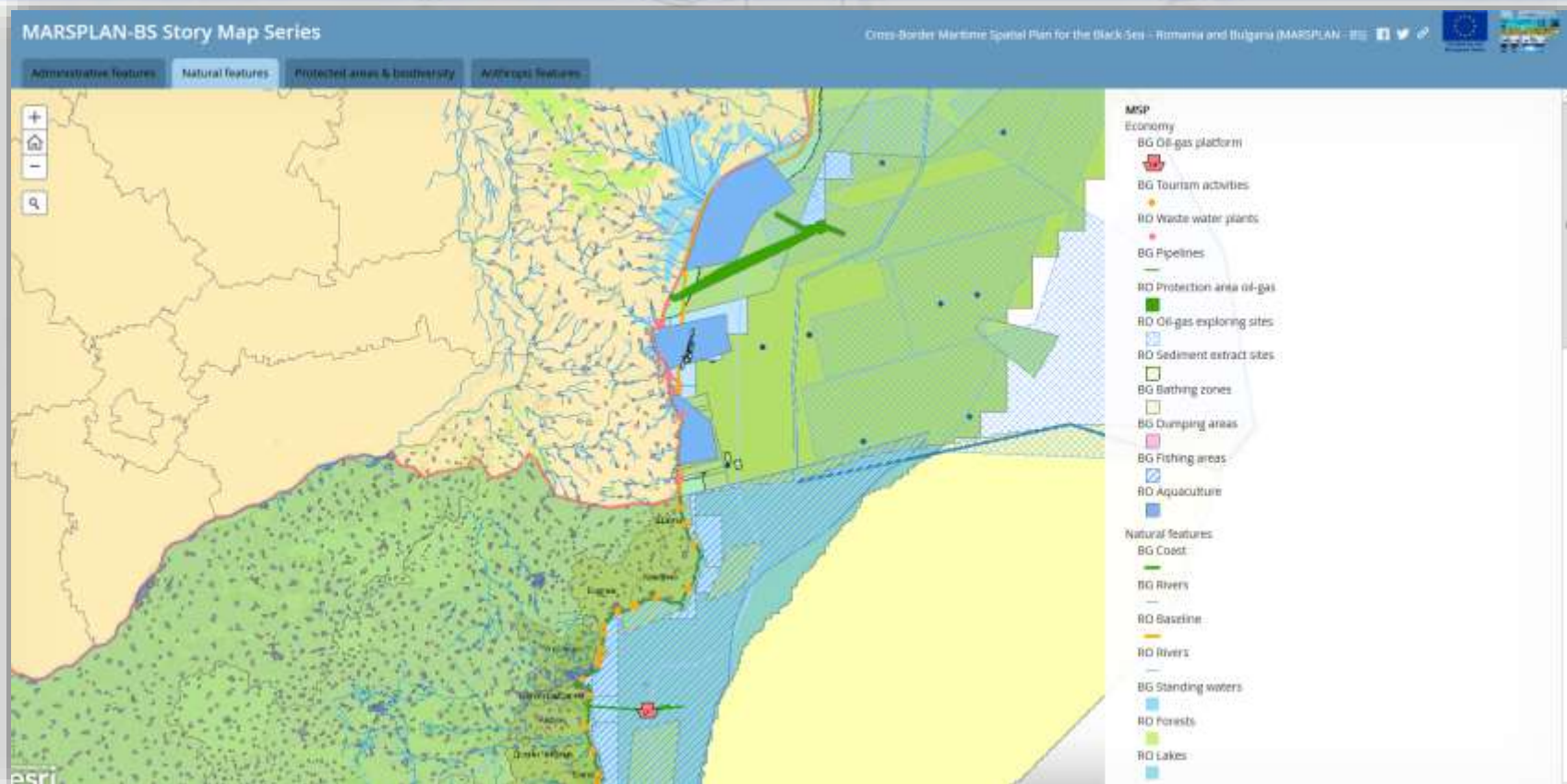
marsplan.ro



Funded by
the European Union



MINISTRY OF REGIONAL DEVELOPMENT
AND PUBLIC ADMINISTRATION





Funded by
the European Union



MINISTRY OF REGIONAL DEVELOPMENT
AND PUBLIC ADMINISTRATION

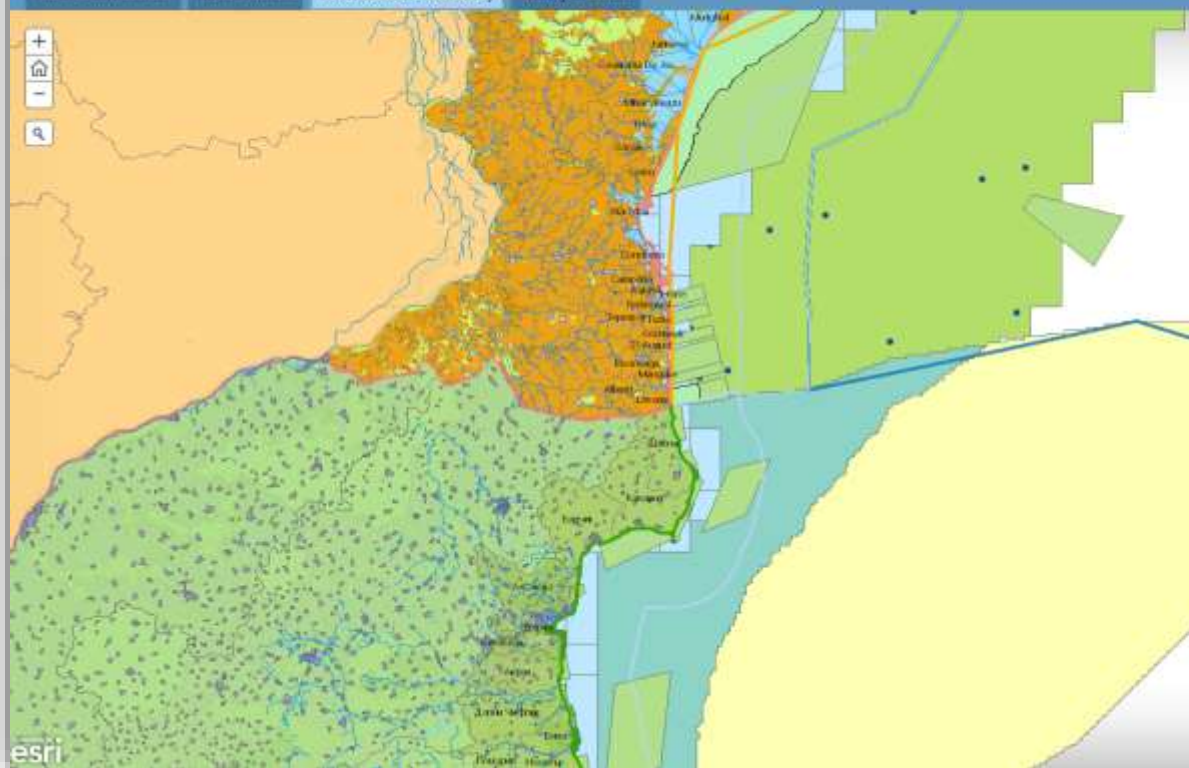


MARSPLAN-BS Story Map Series

Cross-Border Maritime Spatial Plan for the Black Sea – Romania and Bulgaria (MARSPLAN - BS)



Administrative features Natural features Protected areas & biodiversity Anthropogenic features



MSP

Natural features

- BG Coast
- BG Rivers
- RO Baseline
- RO Rivers
- BG Standing waters
- RO Forests
- RO Lakes

Settlements

- BG Buildings
- BG Built space
- BG Settlements
- RO Settlements

Administrative features

- RO Administrative boundary
- BG Territorial waters
- BG Internal waters
- BG LAU2 boundary
- BG NUTS2 boundary
- BG Administrative boundary
- RO LAU2 boundary

esri

This project is funded by the European Union through the European Maritime and Fisheries Fund

marsplan.ro



Funded by the European Union



MINISTRY OF REGIONAL DEVELOPMENT AND PUBLIC ADMINISTRATION



MARSPLAN-BS Story Map Series

Cross-Border Maritime Spatial Plan for the Black Sea - Romania and Bulgaria (MARSPLAN - BS)



Administrative Features Natural Features Protected areas & biodiversity **Anthropic features**



MSP

- Natural features
 - BG Coast
 - BG Rivers
 - RO Baseline
 - RO Rivers
 - BS Bathymetry
 - BG Standing waters
 - RO Forests
 - RO Lakes
- Transportation
 - BG Airport
 - RO Ports
 - BG Port terminals
 - RO Airports
 - BG Marine cables
 - RO Shipping Routes
 - RO Railroads
 - RO Roads
 - BG Railroads
 - BO Roads





Funded by
the European Union



MINISTRY OF REGIONAL DEVELOPMENT
AND PUBLIC ADMINISTRATION



Lessons learned:

- One of the most **important objective** of the project: **synthesize the scientific knowledge about the use** and the possible impacts of different activities in the Bulgarian and Romanian part of the Black Sea -> One of the most **important challenge**: in the process of collecting and synthesizing the data we have easily moved away from the objectives of maritime spatial planning;
- The **methodology for spatial planning** of the marine area provided guidance while developing a **vision for the future use** of the sea areas and should eventually lead to the development of **different scenarios of planning** for this part of the Black Sea;



Funded by
the European Union



MINISTRY OF REGIONAL DEVELOPMENT
AND PUBLIC ADMINISTRATION



Lessons learned:

- The biggest challenge in developing the plan -> **resolve conflicts** and **develop synergies between the uses of the sea**;
- **Maritime spatial planning** must include an **integrated vision of all the uses** within the Black Sea and a **consensus between all institutions** that are part of the process;
- More than that, the project taught us that a **compromise between all public institutions** is **very hard** to achieve and is **harder** to correlate the **public interest** with the **private interest** regarding the use of the maritime space.



Funded by
the European Union



MINISTRY OF REGIONAL DEVELOPMENT
AND PUBLIC ADMINISTRATION



Lessons learned: conflicts and synergies

Compatibilities among maritime uses

	Marine areas																			
	Protected areas	Bathing areas	Small scale fishing	Large scale fishing	Pound nets	Underwater cables	Shipping routes	Dumping sites	Dredging	Anchorage sites	Yachting and cruising	Water sports	Diving areas	Submerged cultural heritage	Bottom trawling	Military practice areas	Waste water discharges	Aquaculture	Oil/gas extraction	
Coastal activities																				
Recreational beaches																				
Tourism activities																				
Residential areas																				
Shipyard areas																				
Port terrestrial areas																				
Waste water treatment																				
Terrestrial transport																				
Electrical grid																				
Agriculture																				
Natural gas/oil pipelines																				
Tidlings dams																				
Fisheries sites																				
Coastal protection																				
Waste management																				
Natura 2000 areas																				
Cultural heritage, landscapes																				

- Conflict
- Weak interaction/conflict
- Good interaction /synergy/

Land- sea interactions - coastal activities and marine uses

	Protected areas	Bathing areas	Small scale fishery	Large scale fishery	Pound nets	Underwater cables	Shipping routes	Dumping sites	Dredging	Anchorage sites	Yachting and cruising	Water sports	Diving areas	Submerged cultural heritage	Bottom trawling	Military practice areas	Waste water discharges	Aquaculture	Oil/gas extraction and transport	
Protected areas																				
Bathing areas																				
Small scale fishery																				
Large scale fishery																				
Pound nets																				
Underwater cables																				
Shipping routes																				
Dumping sites																				
Dredging																				
Anchorage sites																				
Yachting and cruising																				
Water sports																				
Diving areas																				
Submerged cultural heritage																				
Bottom trawling																				
Military practice areas																				
Waste water discharges																				
Aquaculture																				
Oil/gas extraction and transport																				

- Not compatible
- Semi-compatible
- Compatible



Funded by
the European Union



MINISTRY OF REGIONAL DEVELOPMENT
AND PUBLIC ADMINISTRATION



Maritime spatial planning as:

1. Learning process;
2. Technical/scientific process;
3. Communication and negotiation process;
4. Decision making process.

*“Plans are worthless, but planning is everything.”
Dwight D. Eisenhower, 1957*



Funded by
the European Union



MINISTRY OF REGIONAL DEVELOPMENT
AND PUBLIC ADMINISTRATION



MARSPLAN-BS project

- helped the implementation team (Ro & Bg) to understand new challenges and to be prepared for adequate responses;
- started to create the core for a national stakeholders network for the MSP Directive implementation.



Funded by
the European Union



MINISTRY OF REGIONAL DEVELOPMENT
AND PUBLIC ADMINISTRATION



Thank you for your attention!

Bogdan-Andrei GHINEA

Ministry of Regional Development and Public Administration
Directorate General for Regional Development and Infrastructure
Policies and Strategies Department
Tel: +40372 114 518
e-mail: bogdan.ghinea@mdrap.ro